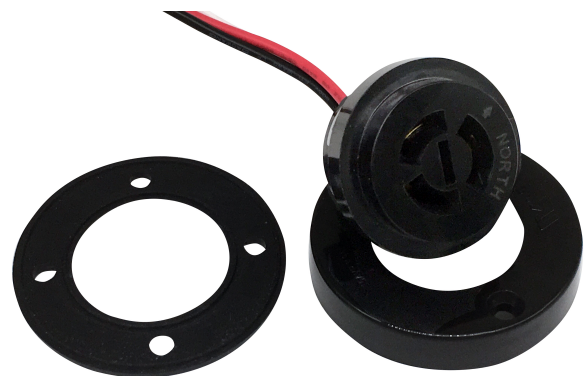


GW-230 Twist-Lock Photocontrol Receptacle

Product Summary

All of the GW-230 series receptacles are designed to be pre-mounted onto luminaires designed to fit an ANSI C136.10-1996 twist-lock photocontrol.

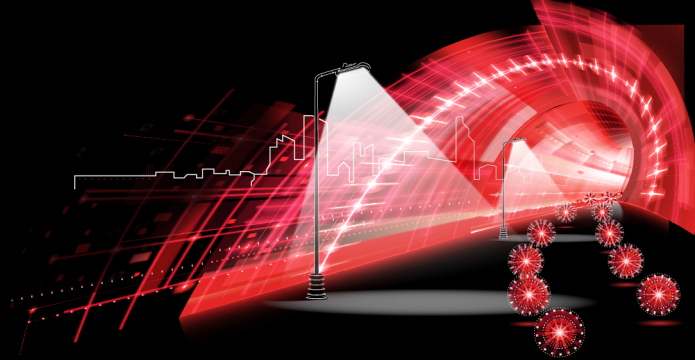
Both GW-230-16 and GW-230-14 have been recognized by UL as applicable U.S. and Canadian safety standards, under their file E188110, Vol.2.



Technical Data

Model No.	GW-230-16	GW-230-14
Rated Voltage	0-480V	
Loading Capacity	15Amp Max.	
Ambient Temperature	-40 °C ~ +70 °C	
Holding Cover	Polycarbonate	
Receptacle	Phenolic (Bakelite)	
Contact	Brass / Phosphor Bronze	
Gasket	Silicone Rubber	
Overall Dimensions (mm)	65mm (Dia.) x 30mm (H)	
Lead Gauge	AWG#16	AWG#14

10/26/2018



Installation

Disconnect power; wire the receptacle according to the diagram. Install with arrow facing NORTH and adjust if necessary. Additional drilling plans available upon request.

